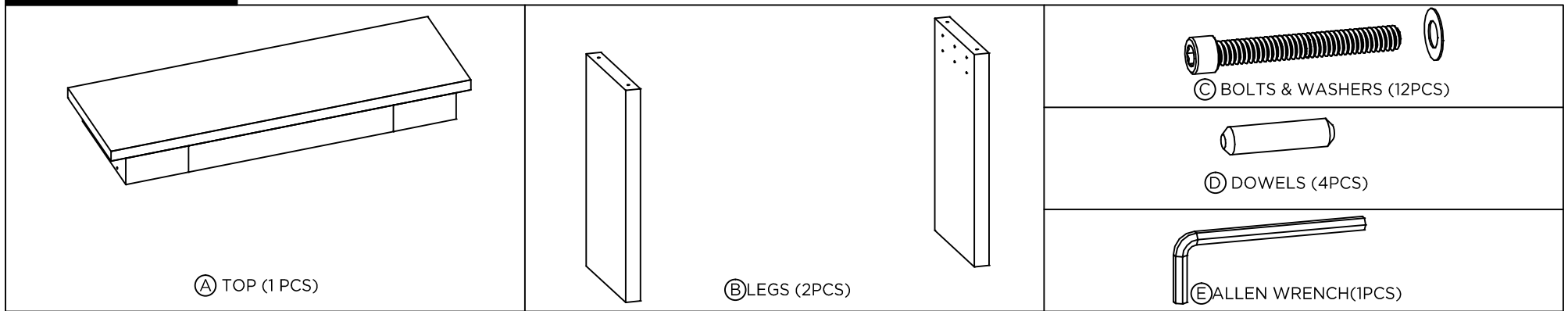


ASSEMBLY INSTRUCTIONS FOR ODOM CONSOLE (ODM-400)

WHAT'S INCLUDED



- 1** - Unpack all parts and hardware carefully.
- Place table top (A) upside down on soft surface. (soft pad, clean moving blanket as an example)
- Place dowels (D) (4) in holes on both sides.
- Align holes and lower legs (B) into place.

- 2** - Thread bolts with washers (C) into holes.
- Tighten using allen wrench (E)

- 3** - Check all connections make sure everything is tight.
- Carefully lift and rotate to upright position.

