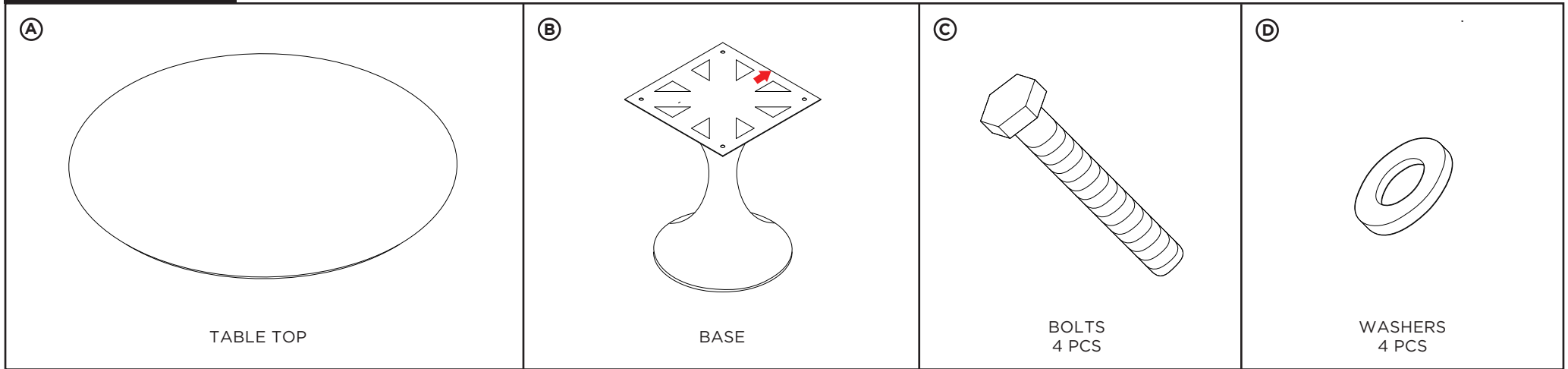


# ASSEMBLY INSTRUCTIONS FOR STOCKHOLM DINING TABLE 60" <STO-375>

## WHAT'S INCLUDED



- 1** Remove table top **(A)** and base **(B)** from boxes. Lower the top on to the base, taking care to align the arrow stickers on top and base.
- 2** Slide bolt **(C)** through washer **(D)** and through the base **(B)** to connect to the table top **(A)**.
- 3** Fully tighten all bolts.

